

MOLECULAR ONCOLOGY: THE PROMISE OF PERSONALIZED CANCER TREATMENT

PRESENTED BY: Dr. Philip Berardi MD, PhD, FRCP(C)
Molecular Oncology Diagnostics Laboratory

NOVEMBER 6, 2018 (5PM-6PM)



The Ottawa
Hospital | L'Hôpital
d'Ottawa



@pberardi



October 2, 2018

The Mind-Body Connection and Healing

Moira Hutchinson, OICC, Hypnotherapy, Emotional Freedom Technique (EFT), Visualization, Mindset Coaching, & Reiki

November 6, 2018

Molecular Oncology: The Promise of Personalized Cancer Treatment

Dr. Philip Berardi, Co-Director of the Ottawa Hospital's Molecular Oncology Diagnostic Laboratory

December 4, 2018

Cancer Coaching and Support: Patients, Caregivers and Families

Patricia Barrett-Robillard– Cancer Coach, Ottawa Regional Cancer Foundation

February 5, 2019

Updates on Lymphoma Treatments from the American

Society of Hematology (ASH) Conference

Doctor from BMT Team, TOH (General Campus)

March 5, 2019

The Gut Biome and Cancer, Including Lymphoma

Alain Stintzi, PhD, Vice-Dean, Graduate and Postdoctoral Studies, Faculty of Medicine, U of O

April 2, 2019

Mindfulness and Meditation: Skills for Well-being

Dr. Lynette Monteiro, Clinical Professor, U of O & Co-founder of the Ottawa Mindfulness Clinic

May 7, 2019

Managing the Psychological Aspects of Your Cancer Diagnosis During and After Treatment: Living With Uncertainty

Bonney Elliott, – Cancer Coach, Ottawa Regional Cancer Foundation

June 4, 2019

Becoming an Informed Advocate for Yourself or Your Loved One During the Cancer Journey

Deborah Baker, Founding member and past chair, CLL Patient Advocacy Group



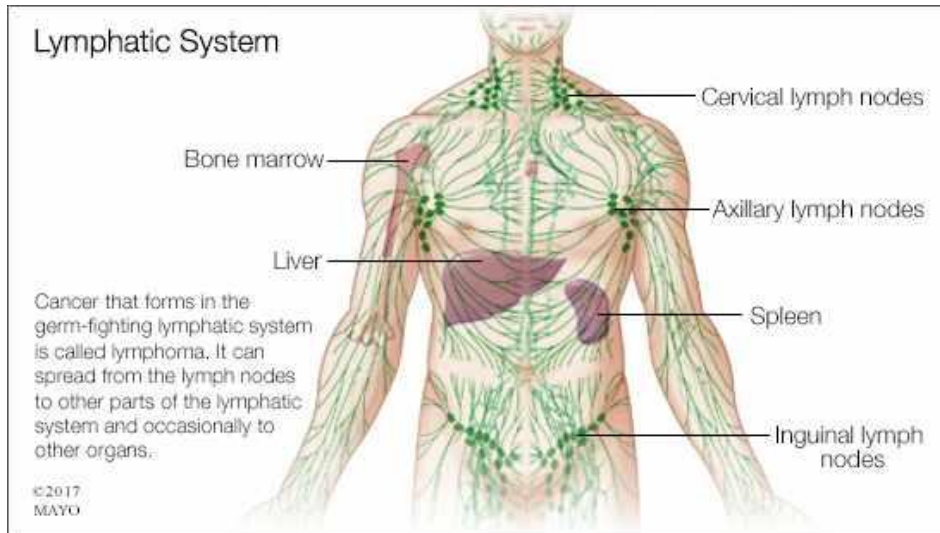
**The Ottawa
Hospital** | **L'Hôpital
d'Ottawa**



A word cloud of medical terms related to cancer and lymphoma. The words are arranged in a circular pattern and vary in size and color. The largest word is 'Cancer' in blue. Other prominent words include 'Tumor' in grey, 'Neoplasm' in orange, 'Hodgkin' in teal, and 'Lymphoma' in red. Smaller words include 'Malignancy', 'Marginal', 'Low-grade', 'Metastatic', 'Large Cell', 'Small Cell', 'Diffuse', 'Sentinel', 'Benign', 'Mantle', 'Leukemia', 'Disease', 'Aggressive', 'Non-Hodgkin', 'Follicular', 'Lymph Node', 'Lesion', and 'Indolent'.

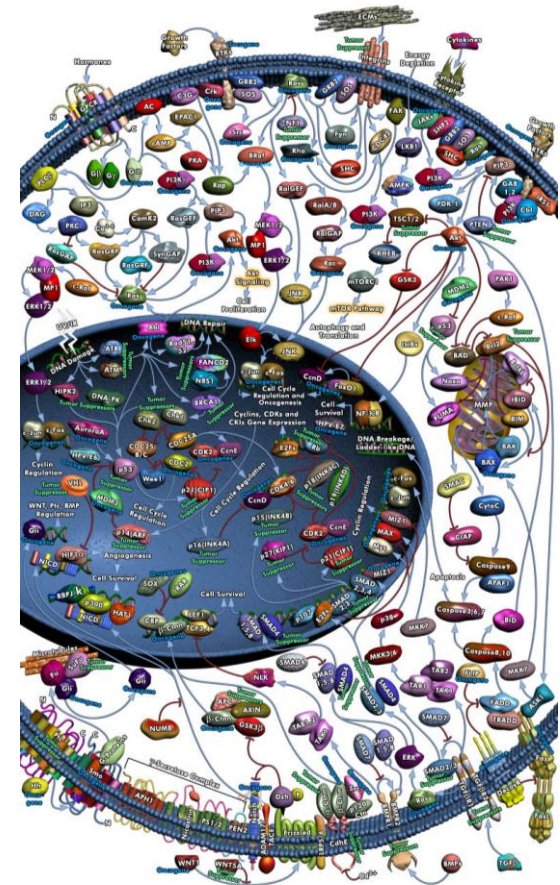
Tumor
Metastatic
Large Cell
Malignancy
Low-grade
Marginal
Cancer
Small Cell
Diffuse
Sentinel
Benign
Hodgkin
Mantle
Neoplasm
Lymphoma
Leukemia
Disease
Aggressive
Non-Hodgkin
Follicular
Lymph Node
Lesion
Indolent

What is lymphoma?



Hodgkin Lymphoma (HL)

Non-Hodgkin Lymphoma (NHL)



How is the landscape of diagnostic services changing?



1897

1928

1929

1948

1950

1957

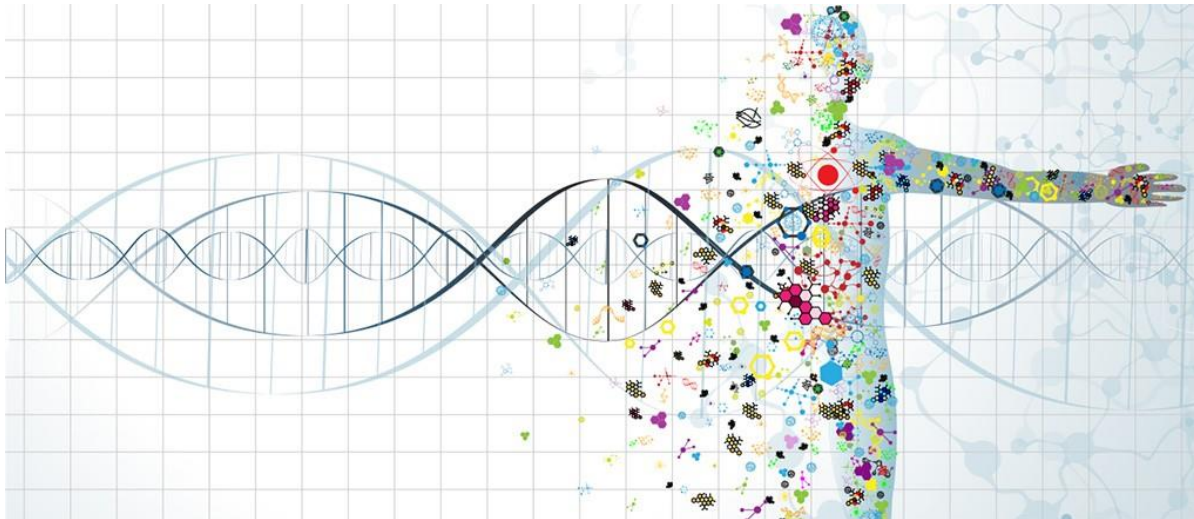
1958

1972

1979

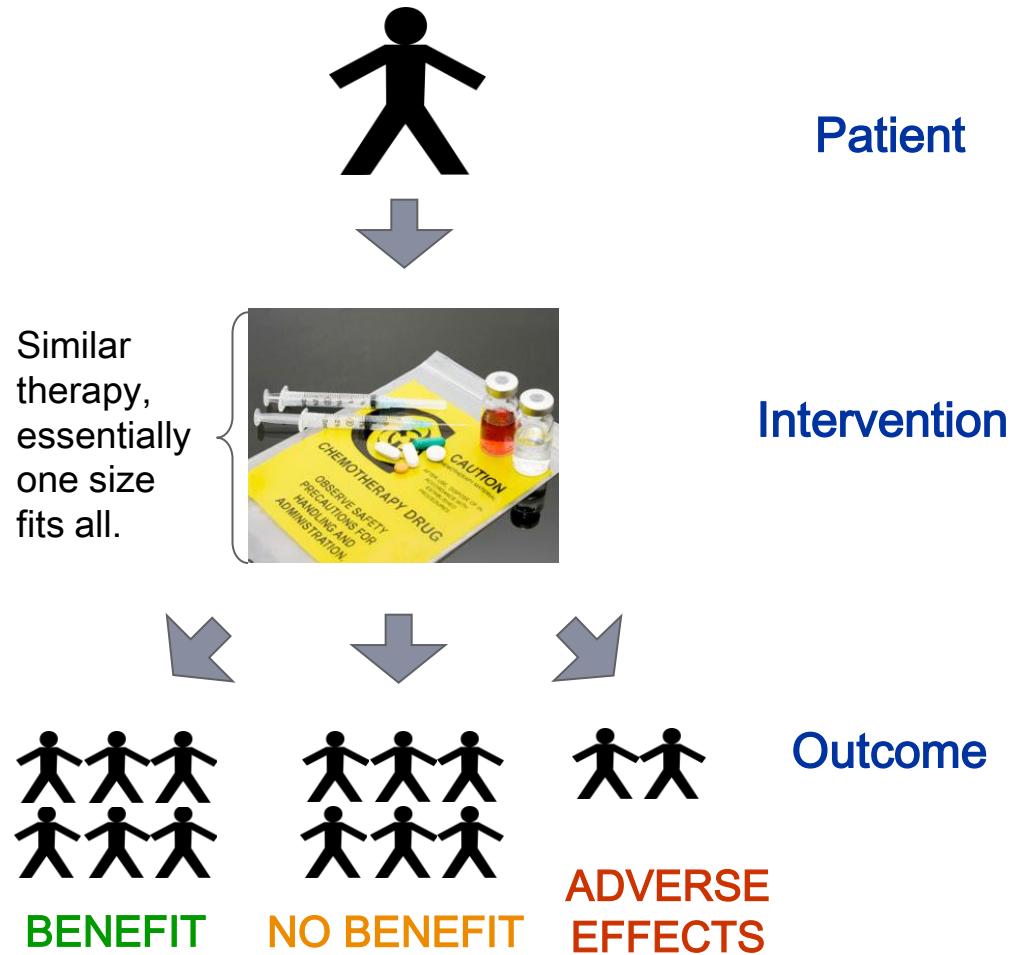
1990

2008



What is precision medicine?

Traditional Approach

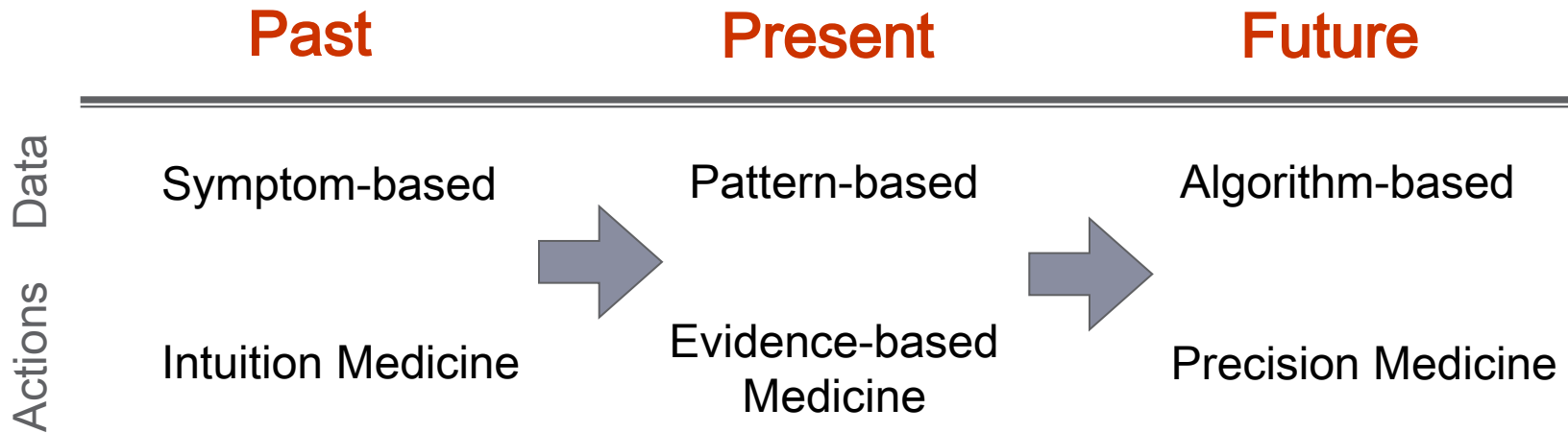


Personalized cancer care

- ▶ Detect
- ▶ Diagnose
- ▶ Target
- ▶ Monitor
- ▶ Support



How might this change medical practice?



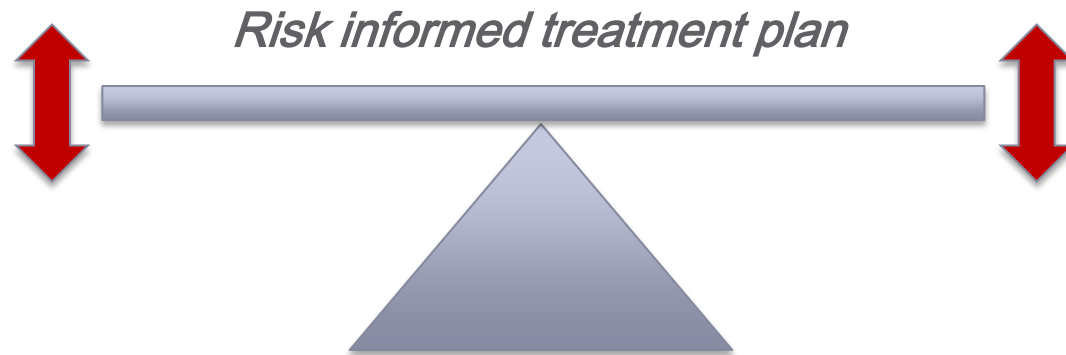
What does this mean practically?

Pre-treatment factors

- *Patient characteristics*
Age, comorbidities, performance status
- *Disease characteristics*
Stage of lymphoma, organ involvement, pathology, blood tests (LDH), gene abnormalities

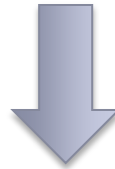
Post-treatment factors

- *Patient characteristics*
Age, comorbidities, performance status
- *Disease characteristics*
Response to therapy, measurable residual disease, molecular monitoring



How can you be better informed about your lymphoma?

An informed patient is an active member of the healthcare team.



MyPathologyReport.ca

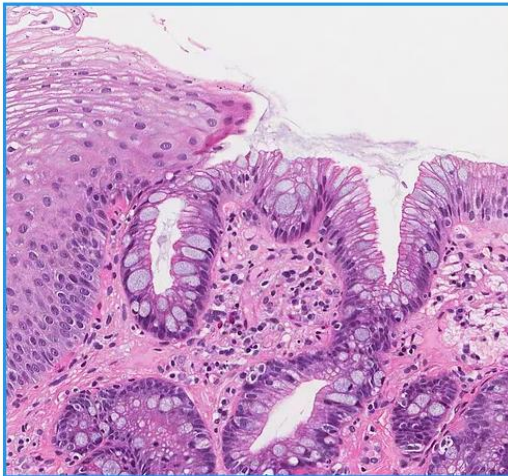
"MyPathologyReport.ca is a free online pathology education resource for patients. The site was created in 2017 by Dr. Jason Wasserman, a pathologist at The Ottawa Hospital. Dr. Wasserman continues to lead the site as Senior Medical Editor. All of the articles on the site are written by pathologists. The goal of the site is to improve quality and safety by empowering patients to become a more active part of their medical team. "

Are there opportunities for you to get involved?

MyPathologyReport

A pathology education resource for patients.

MyPathologyReport is a free educational resource created by Canadian pathologists to help you read and understand your pathology report.



[Find your diagnosis](#)

[Search the pathology dictionary](#)

[Answers to frequently asked questions](#)

[About MyPathologyReport](#)

LYMPHOMA

Please complete our short patient survey.

"MyPathologyReport.ca is a free online pathology education resource for patients. The site was created in 2017 by Dr. Jason Wasserman, a pathologist at The Ottawa Hospital. Dr. Wasserman continues to lead the site as Senior Medical Editor. All of the articles on the site are written by pathologists. The goal of the site is to improve quality and safety by empowering patients to become a more active part of their medical team. "

How are we achieving these goals in Ottawa?

- ▶ Building a state of the art cancer center aimed at offering the best available tools for the diagnosis, treatment & monitoring of our cancer patients and beyond.
- ▶ Partnering with the OHRI to conduct research and identify new targets for improved therapy and outcomes.
- ▶ Working synergistically with the Canadian Cancer Trials Group (CCTG), research and industry partners to become agents of change in the evolving field of cancer care in Ontario.
- ▶ Engaging experts in information technology to optimize the use of patient data collected over the coming years.

Never doubt that a small group of thoughtful
committed citizens can change the world; indeed,
it's the only thing that ever has.

Margaret Mead



The Ottawa
Hospital | L'Hôpital
d'Ottawa

Affiliated with • Affilié à



uOttawa